

Thank you for purchasing a National Cycle product. Read these instructions carefully and thoroughly before beginning work. Dealers, if installing this Frame Kit for a customer, please give them this manual. It contains information needed to properly maintain and use this product.


**Attention:**

Special notes and cautionary measures which can prevent damage to the accessory or motorcycle.


**Note:**

Tips for facilitation of operation, control and adjustment, as well as maintenance work.

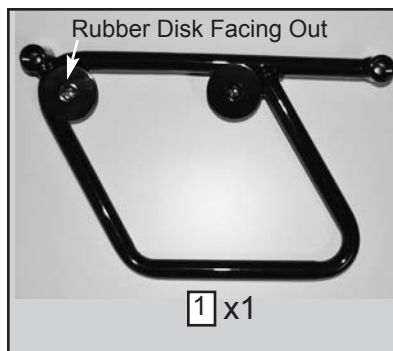
**CONTENTS OF KIT**

Item	Description	Part No.	Qty.	Notes and Tools
1	Frame, Left, Black	34-341314-000	1	
2	Frame, Right, Black	34-341315-000	1	
<b>Bag#1213</b>				
3	Bushing	49-495681-000	4	
4	Screw, M8-1.25" x 50 SS	51-515753-000	4	6mm Hex Wrench, Loctite® Threadlocker 242 or similar

**TOOLS**

6mm Hex Wrench

Recommended- Loctite® Threadlocker 242, Medium Strength or similar



Bag#1213



Figure 1

**PREPARATION**

1. Place motorcycle securely on its side stand.
2. Remove the two fender strut screws and washers from one side of the motorcycle. (6mm Hex Wrench) **Figure 1**

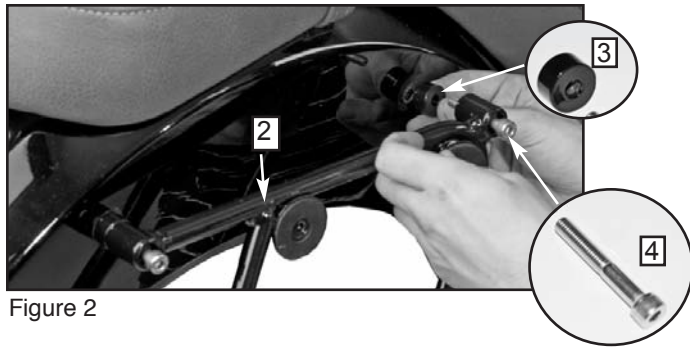



Figure 2



Figure 3

## INSTALLATION

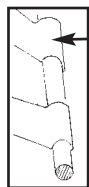
1. Hold appropriate Saddlebag Frame (2) in place at Fender Strut. **Figure 2**

 **We recommend an application of medium threadlocker (Loctite® Threadlocker 242 or similar) to the thread of Screw (4).**

2. Thread a M8 x 50 Screw (4) through Saddlebag Frame, Bushing (3), and into fender strut. **(Hex Key, 6mm) Figure 2**

3. Tighten the 2, M8 x 50 Screws (4) to 18 ft/lbs (216 in/lbs), (24 N-m). **(Hex Key, 6mm) Figure 3**

Repeat procedure on opposite side of motorcycle.



Rest clip on lower section of frame



Turn Fastener clockwise one quarter turn.



## INSTALLATION OF SADDLE BAG TO FRAME

Rest the stainless steel clips attached to the outside of the bag to the lower section of the frame. Engage the quarter turn fastener to the frame. Push in and turn clockwise one quarter turn. There will be a slight spring pressure against the fastener, turn until it stops.



Grab the side of the bag, wiggle it. The bag should be firmly set. If fastener is loose, repeat installation of bag to frame.



**Saddlebag Care:** Wash with a mild soap or detergent and warm water. Use a soft cloth. To remove tar use naphtha or turpentine.



x2

Bag#840



44-446000-000, Red  
44-446001-000, Amber

**Replacement Parts:** Contact National Cycle or visit our web site.

## WARNING

Never ride your motorcycle with loose accessory mounting hardware. Check the hardware for tightness regularly.

Today's motorcycles are built with enough frame rigidity to withstand the moderate loads imposed on them by the foreseeable addition of an accessory(ies). If an accessory(ies) adversely affects your motorcycle's stability, immediately remove the accessory(ies). Do not ride a motorcycle that exhibits unsafe handling traits.

Have experienced service personnel correct any problem before riding with the accessory(ies) installed. For further questions concerning handling problems associated with an accessory(ies), contact your dealer, motorcycle manufacturer, or accessory manufacturer.

Not to exceed 11 lbs (5kg) weight per bag. Do not exceed 80 mph (129 kph) when saddlebags are mounted

National Cycle, Inc. PO Box 158 Maywood, IL 60153-0158 USA

708-343-0400 / Fax: 708-343-0625 / www.nationalcycle.com / e-mail: info@nationalcycle.com